

Chris Bull
Chief Executive
Herefordshire Council/Herefordshire Primary Care Trust



Objectives

- Better outcomes
- Value for money (Support Services, etc)
- Excellent customer/user experience
- Best possible services



Integrated Public Services in Herefordshire

- Two organisations supported by an integrated management structure
- Respect existing governance arrangements
- Significance of roles of existing organisations and roles (e.g. councillors and non-executive directors)
- Clarity of objective



Place

- Dispersed population
- Meet challenges of rurality
 - Access
 - Transport
- Strong identity
- Localism
- Workforce

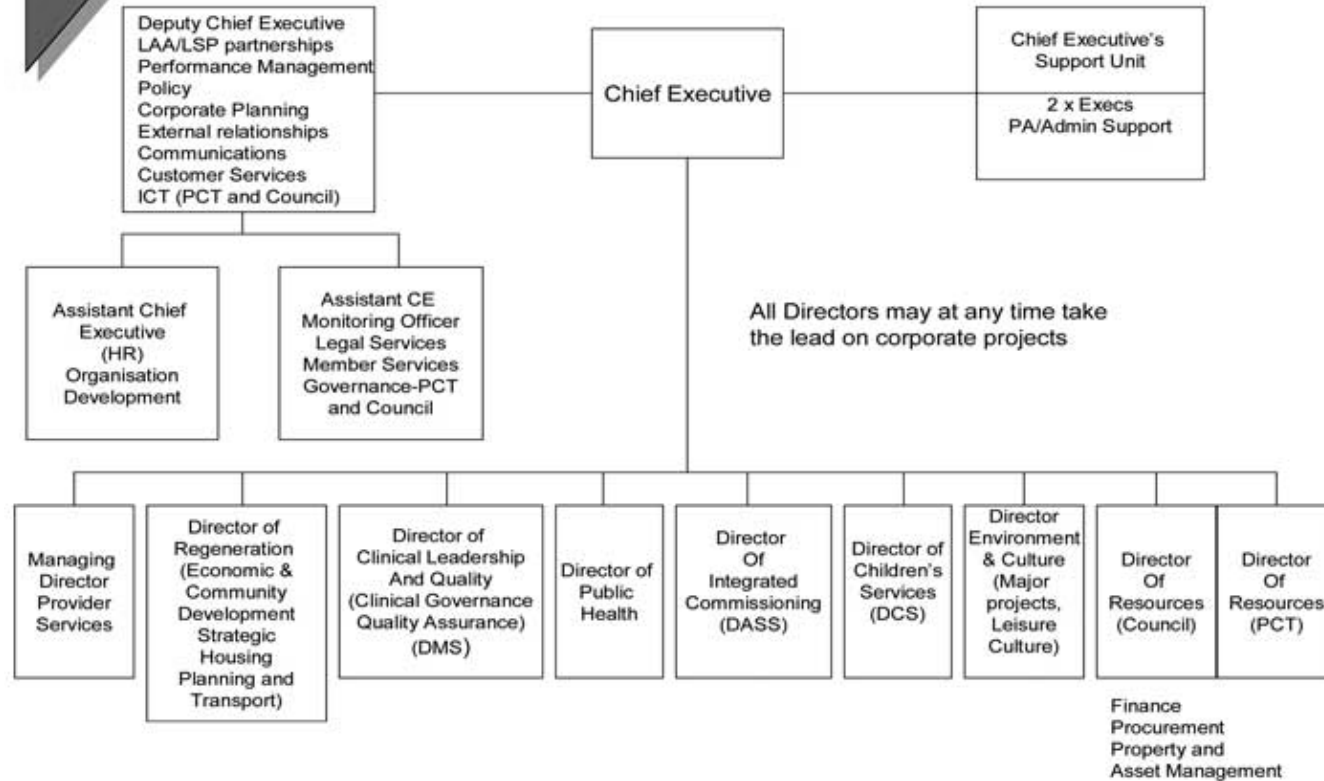


Integrated Management

- Single corporate management team
- Integrated models of support services
- A means to an end, not an end in itself – case by case



JMT STRUCTURE



How?

- Work in progress
- Values and ethos
- Strong OD process
- Quick wins
- Communication
- Remember objectives!



Conclusion

- Right for Herefordshire
- Understand what unites as well as difference
- Governance and leadership
- Part of wider partnership

